

Kenton C. Ward, CFM
Surveyor of Hamilton County
Phone (317) 776-8495
Fax (317) 776-9628

Suite 188
One Hamilton County Square
Noblesville, Indiana 46060-2230

Map Correction-Field Verification

Drain Number: 41

Drain Length: 17,292.57

Drain Name: Benton-Hinesley Drain

Change + / -: 13

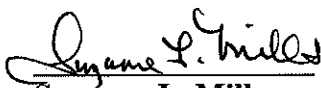
Date: 03-16-2020

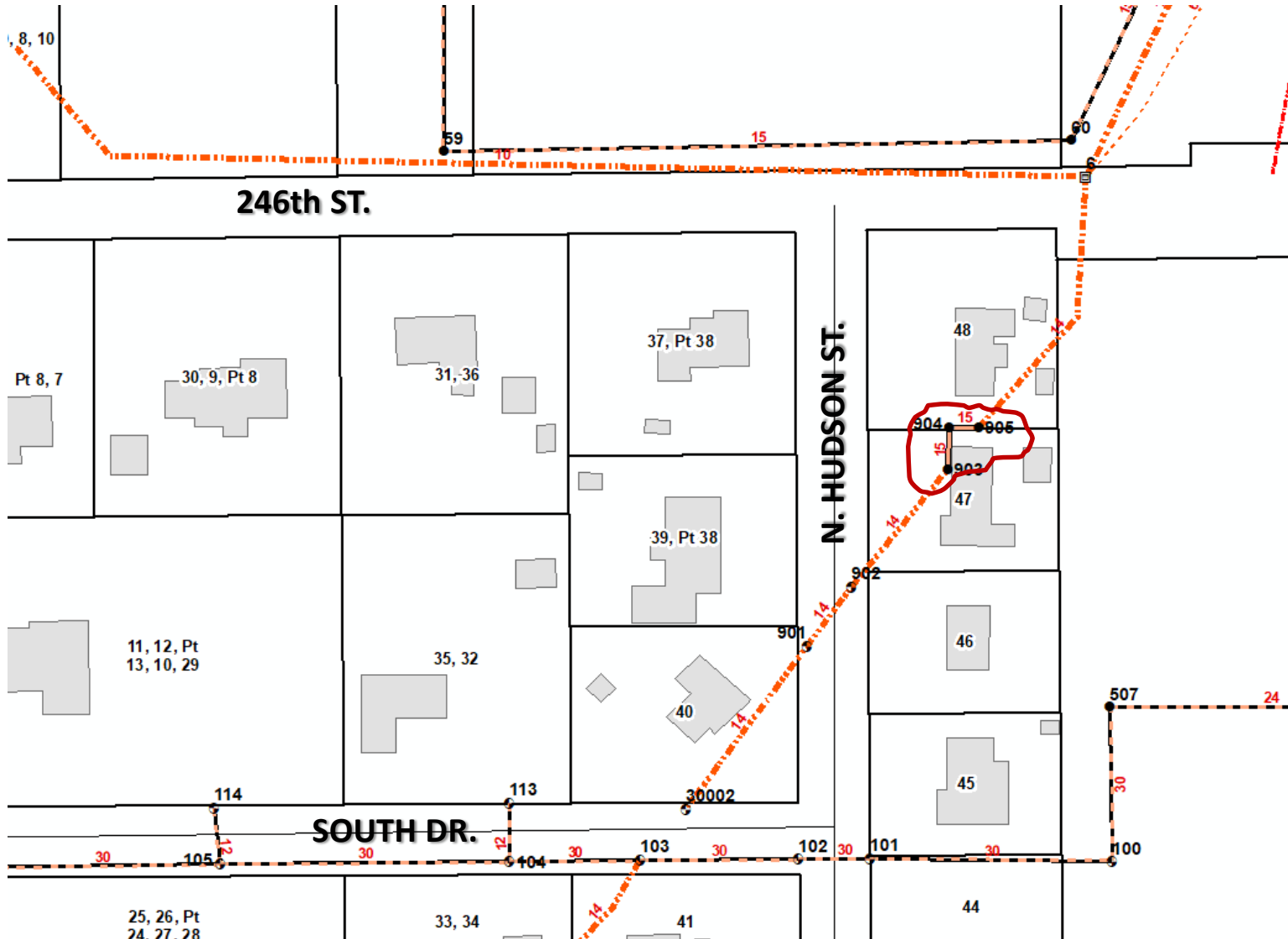
New Length: 17,305.57

Verified By: SLM, SAB (WO-2020-00058)

Notes & Sketch: See Attached Map

Tile was located under the corner of the house at 2456⁵N. Hudson St, Sheridan, Indiana. The existing 14 tile was relocated around the house between Station 15+94 to 16+31. It was replaced with 50 feet of 15" smooth bore plastic pipe. To relocate this new pipe around the corner of the house 3 manholes were set as well.


Suzanne L. Mills
GIS Specialist



This map was compiled by the Hamilton County Surveyor's Office. Although strict accuracy standards have been employed in the compilation of this map, Hamilton County does not warrant or guarantee the accuracy of the information contained herein and disclaims any and all liability resulting from any error or omission in this map.

#41 Benton Hinesley Drain SHERIDAN, IN

Printing Date: 03/16/2020
 Prepared By: Suzanne Mills, GISP
 Hamilton County Surveyor's Office
 One Hamilton County Square, Ste 188
 Noblesville, IN 46060
 317-776-8495

